

# Are you Vision Aware?



## Classroom and corridors

Organised?  
Clutter free?



## Understanding

Checked?



## Lighting

Controllable?  
Working?  
Reduced glare?



## Glasses

On?  
Clean?  
Correct fit?



## Resources

Modified?  
Good quality?  
Clear and clutter free?  
Good level of  
colour contrast?



## Seating

Optimal position?  
Able to see the board?  
Not facing a window?

# Physical Difficulties - Inclusion in the Classroom

Children and Young People's (CYP's) Voice - Are they being heard and listened to?



## Independence

Can the CYP access their lessons?  
Use the toilet?  
Be with their peers?



## Recording Work

Can the CYP record their work how they want?  
Handwriting, scribe, typing, voice input.



## Practical Lessons

Can the CYP access PE?  
School trips?  
ICT or technology lessons?



## Timetable

Are the CYP supported by staff?  
Timetabled rest breaks?  
Can all staff and CYP use and understand appropriate communication strategies?  
Talkers, signing, symbols.



## Equipment

Can all staff help the CYP to use the equipment? Is it always available?  
Have staff completed Moving and Handling training and is the paperwork in place?

# Are you Multi-Sensory Aware?



## Access

**Equipment:** On? Clean?  
Working? Charged?

**Environment:** Think lights,  
noise, clutter, layout.

**Resources:**

Are they familiar, accessible,  
and individual?



## Communication

Remember ALL behaviour is  
communication.

Use a Total Communication approach  
(BSL, AAC, symbols, touch, verbal).

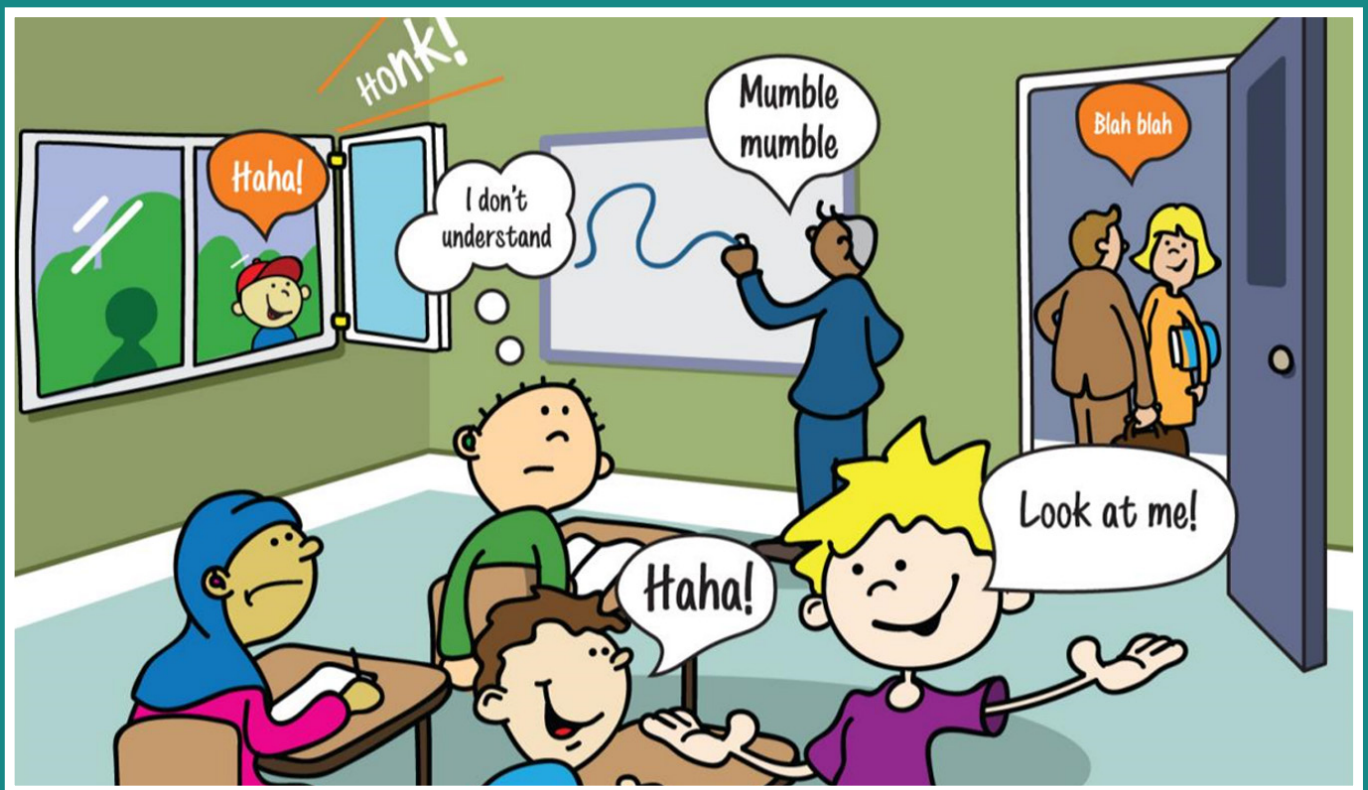
Know how likes, dislikes and  
preferences are communicated.



## Time

To experience. To process and  
respond. To follow a familiar routine.

# Are you Deaf Aware?



Have you repeated other pupil contributions?

Are you standing still?

Are you using visual support?

Are new or key words on the board?

Can I see your face - is the light on your face?

Is it quiet?

Is one person talking at a time?